

1

Measure the total distance from the bottom of the beam to the platform.

2

Using a jack and post, jack up the beam only enough to remove the existing post, no more than 1/4".

3

Determine the top centerline and mark it on the beam.

4

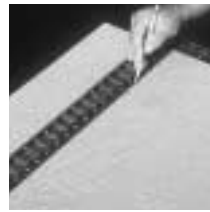
Hang a plumb bob from the top centerline to determine the bottom centerline.

5

Mark the bottom centerline point.

6

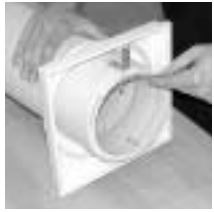
Using a square, draw a centerline perpendicular to the outside edge of the platform.

7

Draw a centerline parallel to the outside edge.

8

Measure from the top of the column to the proper length and make a series of marks around the column shaft.

**13**

Secure two L-brackets on the top and bottom of the column using through-bolts. Do not use screws and do not over tighten.

14

Apply construction adhesive to the top and bottom of the column.

15

Put the assembly in place and plumb. Make sure that the load is centered over the column shaft and evenly distributed. Secure L-brackets to the platform and beam.

16

Apply construction adhesive to the cap and base.

17

Align the square part of the base with the platform below and push the base down until secure.

18

Slide the cap up to the beam and push up until secure. Screws may be used to secure the cap to the beam and the base to the platform. (When using screws, first drill pilot holes and fill with putty to cover screw heads.)

19

Apply caulk to gaps between the cap and base and the column shaft.

20

Prepare the column for painting by sanding lightly with 120-grit or finer wet/dry sandpaper.

21

Remove dust by wiping the column, cap, and base with soap and water.

22

Paint the column with a high-quality oil-base or acrylic-latex paint.